

Environmental Product Declaration

In accordance with ISO 14025:2006 and EN 15804:2012+A2:2019/AC:2021 for:

Cooker hood Line 40 cm, 50 cm, 60 cm, 70 cm, 80 cm, 90 cm, 100 cm.

EPD of multiple products, based on a representative product. Valid for 7 product variants: 40 – 100 cm.

from

Tovenco AB

Tovenco

Programme:

The International EPD System, www.environdec.com

Programme operator:

EPD International AB

Type of EPD:

EPD of multiple products based on a representative product

EPD registration
number:

EPD-IES-0029632:001

Version date:

2026-03-23

Validity date:

2031-03-23

An EPD may be updated or depublished if conditions change. To find the latest version of the EPD and to confirm its validity, see www.environdec.com



GENERAL INFORMATION

Programme Information	
Programme:	The International EPD® System
Address:	EPD International AB Box 210 60 SE-100 31 Stockholm Sweden
Website:	www.environdec.com
E-mail:	support@environdec.com

Product Category Rules (PCR)
CEN standard EN 15804 serves as the Core Product Category Rules (PCR)
Product Category Rules (PCR): <i>Constructions products, PCR 2019:14, version 2.0.1 and part B for ventilation components, NPCR 030:2021, version 1.2</i>
PCR review was conducted by: <i>The technical committee of The International EPD® System. A full list of members is available on www.environdec.com. Chairs of the PCR: Rob Rouwette (chair) and Noa Meron (co-chair). The review panel can be contacted at support@environdec.com.</i>

Third-party Verification
<input checked="" type="checkbox"/> Individual EPD verification without a pre-verified LCA/EPD tool Third-party verifier: Anna Pantze, Tyrens AB, anna.pantze@tyrens.se Approved by: International EPD System
Procedure for follow-up of data during EPD validity involves third party verifier: <input type="checkbox"/> Yes <input checked="" type="checkbox"/> No

The EPD owner has the sole ownership, liability, and responsibility for the EPD.

EPDs within the same product category but published in different EPD programmes, may not be comparable. For two EPDs to be comparable, they shall be based on the same PCR (including the same first-digit version number) or be based on fully aligned PCRs or versions of PCRs; cover products with identical functions, technical performances and use (e.g. identical declared/functional units); have identical scope in terms of included life-cycle stages (unless the excluded life-cycle stage is demonstrated to be insignificant); apply identical impact assessment methods (including the same version of characterisation factors); and be valid at the time of comparison.

For further information about comparability, see EN 15804 and ISO 14025.

INFORMATION ABOUT EPD OWNER

Owner of the EPD: Tovenco AB

Address: Vinnarsjövägen 9-11, 818 45, Hedesunda, Sweden

Contact: Jörgen Holmgren, jorgen@tovenco.se

Address and contact information of the LCA practitioner commissioned by the EPD owner:

Moa Arnaryd, moa.arnaryd@vainioab.com

Description of the organisation: Tovenco's business concept is based on genuine quality, long experience and personal service. We constantly work to stay up to date with the latest technology in terms of materials, quiet fans and efficient lighting. We use LED lighting and EC motors as standard in our residential hoods. We can proudly say that we are the only ones on the market with designer hoods with a volume section for central ventilation. These hoods are developed to meet the market demand for better function for apartments. Through customized solutions and endless colour choices, Tovenco can provide a range of hoods and fans to suit everyone.

PRODUCT INFORMATION

Product name: Tovenco Line

Product identification: By model number

UN CPC code: 448

Product description: Line 40 cm, 50 cm, 60 cm, 70 cm, 80 cm, 90 cm, 100 cm is an ultra-thin, minimalist series of cooker hoods designed for installation under wall cabinets — ideal for those who want a discreet solution without compromising on performance. The hood is mounted above the cooktop to effectively capture and extract cooking fumes, steam, and airborne grease, while also providing light during cooking.

The hood is designed to be connected to an external ventilation system, where a fan unit can be installed either directly in conjunction with the hood or centrally within the building. The fan ventilation is not included in the product.

Name and location of production site(s): Tovenco in Hedesunda, Sweden.

Information related to EPDs of multiple products

This is an EPD of multiple products, based on a representative product. The EPD is therefore applicable for different model configurations with minor differences. The included models are Line 40 cm, Line 50 cm, Line 60 cm, Line 70 cm, Line 80 cm, Line 90 cm, and Line 100 cm. The presentative product for this LCA was chosen as 60 cm. The choice was based on production volumes, with Line 60 cm being the most produced and sold model.

CONTENT DECLARATION

The values outside the parentheses are for the representative product, while the values inside the parentheses show the smallest and largest values for all products included in the EPD.

Product content	Mass, kg	Post-consumer recycled material, mass-% of product	Biogenic material, mass-% and kg C/DU
Stainless steel EN 1.4301	10.75 (10.55-14.50)	51	0.00
Printed circuit board	0.50	0.00	0.00
Aluminium (filter)	0.65 (0.35-0.95)	0.00	0.00
Cable	0.25 (0.25-0.30)	0.00	0.00
LED-light	0.10 (0.10-0.20)	0.00	0.00
Electric motor	2.45	0.00	0.00
TOTAL	14.7	51	0.00

Packaging materials	Mass, kg	Mass-% (versus the product)	Biogenic material, kg C/product or declared unit
Corrugated cardboard	2.7 (2.7-3.6)	18.4	1.35
TOTAL	2.7 (2.7-3.6)	18.4	1.35

Dangerous substances from the candidate list of SVHC for Authorisation is below 0.1% in the product.

LCA INFORMATION

Declared unit: One cooker hood.

Conversion factor to mass: 0,06804 1/kg

Reference service life: When used in accordance with the manufacturer's instructions, the cooker hood has a technical service life of 15 years. This represents the average duration for which the product has been demonstrated to function as intended, based on industry-specific data. The actual service life is estimated at 25 years. This estimate is based on the documented lifespan of the installed components within the cooker hood.

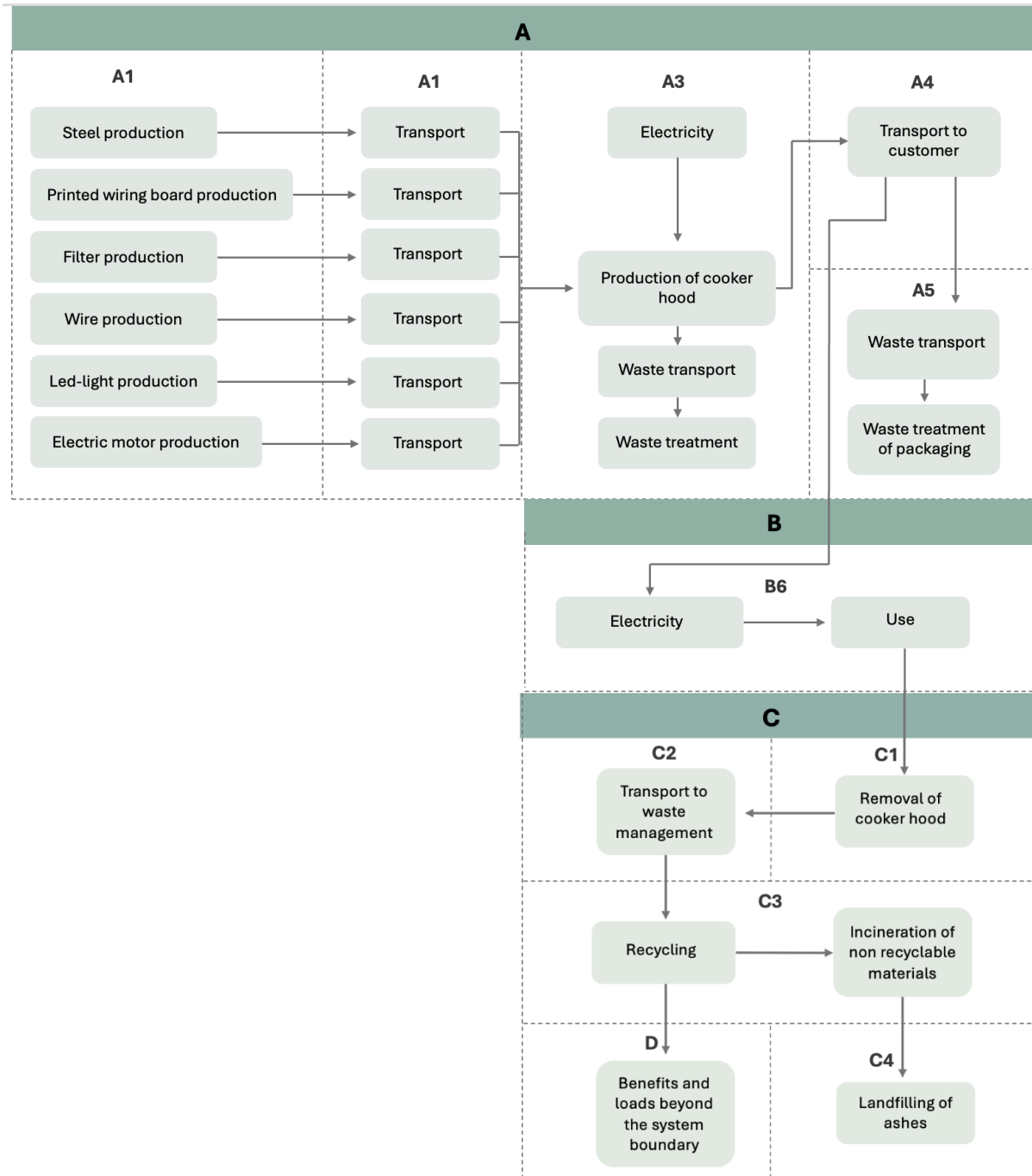
Time representativeness: 2024

Geographical scope: Global raw material supply, Swedish production and Swedish sales.

Database(s) and LCA software used: Ecoinvent 3.11 and openLCA 2.5.0.

Description of system boundaries: Cradle-to-grave and module D (A + B + C + D).

Process flow diagram:



Product stage (A1-A3)

Raw material acquisition (A1) and transportation (A2) constitute the first stage of the cooker hood life cycle. Raw materials are transported by lorry from suppliers to the manufacturing facility in Hedesunda, Sweden, where the product is produced. The main material in the cooker hood is stainless-steel supplied by Outokumpu. To model this input, the EPD *Hot*

rolled austenitic stainless steel with registration number EPD-IES-0017255 published by Outokumpu was used.

Upon arrival, materials are handled internally using electrically powered forklifts (battery-operated). The total internal transport distance is approximately 150 m, and the associated energy consumption is included in this module.

All sheet metal processing, including laser cutting and bending, is performed using electrically powered machinery. The total electricity consumption is estimated at 14.31 kWh per cooker hood. This figure includes energy used for manufacturing operations as well as for lighting and space heating in the facility, supplied by air-source heat pumps and district heating. No lubricating oils or water are used in the manufacturing process.

During the cutting of cooker hood covers from steel sheets, approximately 0.75 kg of steel scrap is generated per cover. This material loss is accounted for in the LCA by adding 0.75 kg of steel per functional unit in modules A1 and A2. The waste treatment of this material loss is also accounted for in module A3, as the steel is discarded and treated as waste. No additional material losses occur during the production process.

Once the materials are prepared, assembly of the finished product takes place on multiple production lines within the factory. After final assembly and testing, the cooker hood is packaged in cardboard boxes for distribution to the end customer.

Transportation to customer (A4)

The assembled cooker hoods are transported by lorry to customers all over Sweden. The transports are carried out by transport companies and are therefore not under operational control of the EPD owner. Therefore, the transportation to customer has been based on the default scenario for domestic production in accordance with NPCR 030:2021, where the average transportation distance from the manufacturing site to the construction site is 300 km. The means of transport is Lorry class Euro6 with an average load factor of 5.79 tons. Very few cooker hoods are sold outside of Sweden, therefore these transports have been excluded from the geographical scope of this assessment.

Installation of the product in the building (A5)

As the product is installed manually, no environmental impacts from the installation process are included in this module. However, the end-of-life treatment of the corrugated cardboard packaging is included. As this life-cycle stage is outside the control of the EPD owner and no primary data were available, secondary data were used. Recycling rates for cardboard in Sweden were obtained from Naturvårdsverket (2023) and applied in the end-of-waste modelling. According to these data, approximately 81% of the cardboard is recycled, while the remaining 19% is incinerated with energy recovery.

Transport from the construction site to recycling facilities and final disposal are also included and is based on default data from PCR 2019:14. Transport distances were assumed to be 80 km for materials sent to recycling and 130 km for materials sent to incineration. The transport was modelled using a 16–32 tonne EURO 5 lorry.

Use of the installed product (B1)

There are no resources needed to use the product except the energy accounted for in B6.

Maintenance (B2)

No maintenance is needed.

Repair (B3)

If the product is properly maintained, no repairs should be needed during its service life.

Replacement (B4)

No parts are expected to be replaced during its service life.

Refurbishment (B5)

No refurbishment is expected.

Energy use to operate building integrated systems (B6)

The expected energy consumption is based on the cooker hood's annual energy consumption of 29 kWh/year, which is presented in the product sheet for cooker hood Line, multiplied with the reference service life of 15 years which results in an expected energy consumption of 435 kWh/reference service life. The simulated electricity mix is Swedish market average from theecoinvent database.

Operational water use by building integrated technical systems (B7)

The product has no operational water use.

Deconstruction (C1)

The product is assumed to be manually dismantled and sorted as household appliances at a designated recycling center.

Transport to waste management (C2)

The transport from the building site to the destination for recycling and final disposal was based on default data from PCR 2019:14. Transport of materials not to be incinerated was assumed to be 80 km, and transport of materials to be incinerated was assumed to be 130 km. The means of transport used was 16-32 tonne lorry (EURO 5) with 50% load factor.

Waste processing (C3)

The EPD Hot rolled austenitic stainless steel (EPD-IES-0017255) by Outokumpu was used for modelling the waste processing of the stainless-steel parts. According to the EPD, 95% of the steel is material recycled and 5% is landfilled.

The waste processing for the remaining materials was modelled according to the default scenario in NPCR 030:2021. Central sorting of the materials in the product. The plastic is incinerated and the metals are recycled. The electronic parts are recycled with incineration of non-recycled parts.

Waste disposal (C4)

Landfilling of ashes from incineration.

Benefits and loads beyond the system boundary (D)

This module includes the potential environmental benefits beyond the system boundary from material recycling and energy recovery at end-of-life, in accordance with EN 15804 and PCR 2019:14 + A2.

For metals, the recycled output from module C3 is assumed to substitute primary metal production in subsequent product systems. A material yield factor is applied to account for losses between the end-of-waste point and the point of substitution. No quality adjustment factor is applied for metals. Stainless steel substitution is based on supplier-specific EPD data, while other metals are modelled according to the PCR methodology.

For packaging, Module D includes the benefits from recycling of corrugated cardboard, considering recycled content and process yield losses. It also includes the benefits from energy recovery of the fraction not recycled, where recovered energy is assumed to substitute conventional heat production.

Additional LCA-information

Data collection and data quality:

Specific data for the manufacturing of the cooker hood are based upon frequent contact with the production sites and owner of the product to guarantee that this LCA is based on the most up-to-date production data from 2025. Site-specific electricity consumption data is derived from Guarantees of Origin certificates from 2025. Upstream and downstream data were sourced from Ecoinvent version 3.11, with all datasets being less than 10 years old. Geographical representativeness was ensured by using datasets that reflect the regions in which the respective processes take place. When region-specific data was not available, the geographical scope was expanded to European or global datasets. Technological representativeness was ensured by selecting datasets corresponding to the relevant activities and processes. In cases where no dataset matching exactly that process were available, similar technological processes were used. All data used complies with the rules on system boundaries and cut-offs.

A data quality assessment in accordance with EN 15942 has been conducted. The assessment covers the geographical, technical, and temporal representativeness of the data contributing to at least 80% of the results for each declared environmental impact indicator. The evaluation was performed using the Product Environmental Footprint (PEF) method (European Commission, 2021).

The assessment resulted in a Data Quality Rating (DQR) score within the range $1.5 < \text{DQR} \leq 2.0$, indicating that the overall data quality of the study is considered very good.

For modelling the material input of stainless steel, an upstream Environmental Product Declaration (EPD) for hot-rolled austenitic stainless steel (EPD-IES-0017255) published by Outokumpu was used. The EPD is considered to be of high quality, as it provides more accurate representation of the geographical scope, raw material inputs, and specific production processes compared to a generic dataset. However, since the EPD is not fully compliant with the applicable LCA rules under which this EPD is verified, data for certain environmental impact categories were missing. This has been handled by using a

representative dataset for stainless steel from Ecoinvent to calculate the additional voluntary impact categories.

Selected general data are judged to be representative of the actual processes regarding temporal, geographical, and technological aspects. The Ecoinvent database is considered to be high quality.

Electricity modelling

Tovenco purchases 100% renewable electricity through guarantees of origin agreements, which is a mix of 8.8% hydro, 78.4% nuclear, 0.4% wind power, 0.2% photovoltaic and 12.2% biomass power. The GWP-GHG impact of the electricity mix is 0.03361 kg CO₂ eq/kWh.

The electricity used during the manufacturing (A3) is based on the following:

Energy source	kWh	%
Hydro, run-of-river, high voltage	1.26	8.8
Nuclear, boiling water reactor, high voltage	11.2	78.4
Wind, 1-3MW turbine, onshore, high voltage	0.057	0.4
Photovoltaic, 570kWp open ground installation, low voltage	0.029	0.2
Biomass power generation, medium voltage	1.75	12.2
Total	14.31	100

Characteristic product properties of biogenic carbon:

The corrugated cardboard box used as packaging material in module A5 has a high biogenic carbon content. As long as the cardboard box is in use, this carbon is stored in the product. When the cardboard box is finally incinerated at end-of-life, this carbon is re-emitted into the air. The amount of carbon stored in the packaging is assessed based on the following formula and is provided in the overall LCA results. Calculation: CO₂ content kg in air = (paper content) x (carbon content in paper) x (mol ratio CO₂ – C) / (1+ humidity ratio) presented in kg CO₂ / kg Cellulose materials.

The considered parameters are detailed below:

- Carbon content for cardboard: 45%
- Humidity rate for cardboard 1.1: 1 (0%)
- Mol ratio CO₂/C: 3.67

The carbon content for cardboard was derived from the dataset in Ecoinvent.

Note: 1 kg of biogenic carbon is equivalent to 44/12 kg of CO₂.

Assumptions:

Due to limited availability of specific datasets, the most representative dataset available was selected for the cooker hood's printed circuit board (PCB). The selection was based on literature review as well as consultations with Tovenco and external experts. As the PCB contributes significantly to the overall environmental impact (29% of GWP-GHG), the chosen dataset represents a conservative modelling assumption and may result in a slight overestimation of the actual impact of the specific circuit boards used in the product.

Due to limited availability of representative datasets, a technologically similar motor process was used as a proxy for the cooker hood motor. Although not fully identical to the actual motor, this approach is considered conservative. The primary difference relates to energy efficiency during the use stage in which primary manufacturer data were used, increasing the accuracy of the environmental performance. To improve geographical representativeness, the dataset has been adjusted to reflect Swedish electricity supply and European heat production.

As several different types of cooker hoods are manufactured at the site, an allocation procedure was applied to determine the energy consumption associated with the production of the 60 cm cooker hood in module A3. The allocation was based on machine-specific energy use, calculated by distributing the energy consumption of each machine according to the time required to manufacture the different cooker hood models on that machine.

In addition, energy consumption from lighting and heating at the manufacturing site was included. This energy use was allocated by dividing the total annual energy consumption for lighting and heating by the total number of cooker hoods produced during the same year.

During the product stage (A1–A3), electric forklifts are used to transport incoming materials within the manufacturing site over a total distance of 150 m. As no primary data were available for the energy consumption of the forklift, secondary performance data from a Toyota electric forklift were used as a proxy. When operated with load, the forklift has a travel speed of 12 km/h and an energy consumption of approximately 2.2 kWh per hour.

The energy consumption for the material transport was estimated based on the forklift's hourly energy use and the driven distance. Assuming operation at a constant speed of 12 km/h (12,000 m/h), the time required to travel 150 m is 0.0125 hours. Multiplying this duration by the energy consumption per hour results in an estimated energy use of approximately 0.028 kWh. This calculation assumes ideal operating conditions and does not account for additional energy demand associated with acceleration, deceleration, or variations in operating conditions.

Allocation of waste:

At the end-of-life, 95% of the stainless steel, as well as other metals in the cooker hood, is material recycled. The allocation of waste follows the polluter-pays principle, in accordance with PCR 2019:14. The system boundary to the subsequent product system is therefore set to when the recovered material is used for specific purposes, has a positive economic value, or fulfills the technical requirements for the specific purposes and meets the existing legislation and standards applicable to products.

At this system boundary, a cut-off approach has been applied. This means that all unit processes occurring before the end-of-waste point are assigned to the cooker hood product

system, while all processes occurring after the end-of-waste point are assigned to the subsequent product system. Consequently, the environmental burdens associated with recycling up to the end-of-waste stage, as well as the burdens from incineration prior to energy recovery, are included in the cooker hood product system.

For materials that are landfilled, all environmental burdens are allocated to this product system until the materials no longer pose any overall adverse environmental or human health impacts.

Cut-off:

In module A5, the cooker hood is assumed to be installed manually. Any energy use associated with power tools is considered negligible and has therefore been excluded, as the potential environmental impact from such tools is well below 1% of the total impact of the product.

The life cycle inventory (LCI) data used in this LCA comply with the data completeness requirements of the applicable PCR 2019:14. At least 99% of total mass and energy inflows are included at the unit process level. For the life-cycle stages A1–A3, A4–A5, C1–C4, the aggregated use stage modules B1–B5 and B6–B7, as well as module D, a minimum of 95% of total mass and energy inflows is covered. Furthermore, at least 95% of the environmental impacts for each aggregated module are included in the LCI data.

Modules declared, geographical scope, share of primary data (in GWP-GHG results) and data variation (in GWP-GHG results):

	Product stage			Distribution/ installation stage		Use stage							End-of-life stage				Beyond product life cycle	
	Raw material supply	Transport	Manufacturing	Transport	Construction installation	Use	Maintenance	Repair	Replacement	Refurbishment	Operational energy use	Operational water use	De-construction demolition	Transport	Waste processing	Disposal	Reuse-Recovery- Recycling-potential	
Module	A1	A2	A3	A4	A5	B1	B2	B3	B4	B5	B6	B7	C1	C2	C3	C4	D	
Modules declared	x	x	x	x	x	x	x	x	x	x	x	x	x	x	x	x	x	x
Geography	Global	SE	SE	SE	SE	SE	SE	SE	SE	SE	SE	SE	SE	SE	SE	SE	SE	SE
Share of primary data	8.5%			-	-	-	-	-	-	-	-	-	-	-	-	-	-	-
Variation – products	+24,5% / -5,74%			-	-	-	-	-	-	-	-	-	-	-	-	-	-	-
Variation – sites	0%			-	-	-	-	-	-	-	-	-	-	-	-	-	-	-

Process	Source type	Source	Reference year	Data category	Share of primary data, of GWP-GHG results for A1-A3
Printed wiring board	Database	Collected data & Ecoinvent v3.10	2024, 2025	Secondary data	0%
Production of LED-light	Database	Collected data & Ecoinvent v3.10	2024, 2025	Secondary data	0%
Production of electric motor	Database	Collected data & Ecoinvent v3.10	2024, 2025	Secondary data	0%
Production of aluminum filter	Database	Collected data & Ecoinvent v3.10	2024, 2025	Secondary data	0%
Production of wiring	Database	Collected data & Ecoinvent v3.10	2024, 2025	Secondary data	0%
Production of corrugated cardboard box	Database	Collected data & Ecoinvent v3.10	2024, 2025	Secondary data	0%
Production of stainless steel	EPD	EPD from Outokumpu	2024	Primary data, secondary data	5.8%
Transportation of raw materials to manufacturing site	Database	Collected data & Ecoinvent v3.10	2024, 2025	Primary data	2.3%
Manufacturing of product	Database	Collected data & Ecoinvent v3.10	2025	Primary data	0,4%
Treatment of waste steel	EPD	EPD from Outokumpu	2024	Primary data, secondary data	0.012%
Total share of primary data, of GWP-GHG results for A1-A3					8.5%

ENVIRONMENTAL PERFORMANCE

LCA results of the product(s) - main environmental performance results

The impact categories and associated indicators, methods and characterisation factors of EN 15804:2012+A2:2019 of 2022-02-15 (EF 3.1) were used.

Mandatory impact category indicators according to EN 15804

Results per functional or declared unit																
Indicator	Unit	A1-A3	A4	A5	B1	B2	B3	B4	B5	B6	B7	C1	C2	C3	C4	D
GWP - total	kg CO ₂ eq.	1,13E+02	8,52E-01	4,26E+00	0,00E+00	0,00E+00	0,00E+00	0,00E+00	0,00E+00	1,89E+01	0,00E+00	0,00E+00	2,67E-01	1,32E+00	8,05E-03	-2,66E+01
GWP - fossil	kg CO ₂ eq.	1,17E+02	8,51E-01	2,12E-01	0,00E+00	0,00E+00	0,00E+00	0,00E+00	0,00E+00	1,67E+01	0,00E+00	0,00E+00	2,67E-01	1,28E+00	8,01E-03	-2,69E+01
GWP - biogenic	kg CO ₂ eq.	-4,05E+00	5,92E-04	4,05E+00	0,00E+00	0,00E+00	0,00E+00	0,00E+00	0,00E+00	5,68E-01	0,00E+00	0,00E+00	4,72E-05	4,16E-02	3,74E-05	2,83E-01
GWP - luluc	kg CO ₂ eq.	2,79E-01	2,87E-04	1,24E-04	0,00E+00	0,00E+00	0,00E+00	0,00E+00	0,00E+00	1,62E+00	0,00E+00	0,00E+00	1,04E-04	7,27E-04	3,78E-06	-6,77E-02
ODP	kg CFC 11 eq.	2,60E-04	1,86E-08	3,07E-09	0,00E+00	0,00E+00	0,00E+00	0,00E+00	0,00E+00	5,70E-07	0,00E+00	0,00E+00	4,36E-09	6,48E-09	1,28E-10	1,21E-10
AP	mol H ⁺ eq.	1,05E+00	1,83E-03	9,57E-04	0,00E+00	0,00E+00	0,00E+00	0,00E+00	0,00E+00	1,95E-01	0,00E+00	0,00E+00	6,65E-04	4,87E-03	4,10E-05	3,94E-05

EP-fresh water	kg P eq.	1,67E-02	6,33E-06	1,80E-06	0,00E+00	0,00E+00	0,00E+00	0,00E+00	0,00E+00	1,03E-03	0,00E+00	0,00E+00	1,68E-05	1,72E-04	3,57E-07	3,38E-07
EP-marine	kg N eq.	2,44E-01	4,30E-04	3,68E-04	0,00E+00	0,00E+00	0,00E+00	0,00E+00	0,00E+00	2,48E-02	0,00E+00	0,00E+00	1,74E-04	1,18E-03	1,45E-05	1,39E-05
EP-terrestrial	mol N eq.	1,57E+00	4,75E-03	3,99E-03	0,00E+00	0,00E+00	0,00E+00	0,00E+00	0,00E+00	3,25E-01	0,00E+00	0,00E+00	1,89E-03	1,25E-02	1,59E-04	1,52E-04
POCP	kg NMVOC eq.	5,23E-01	2,90E-03	1,44E-03	0,00E+00	0,00E+00	0,00E+00	0,00E+00	0,00E+00	8,28E-02	0,00E+00	0,00E+00	9,54E-04	3,67E-03	5,34E-05	5,09E-05
ADP-minerals&metals*	kg Sb eq.	1,41E-02	2,99E-06	8,58E-07	0,00E+00	0,00E+00	0,00E+00	0,00E+00	0,00E+00	1,76E-03	0,00E+00	0,00E+00	8,80E-07	2,04E-05	2,54E-08	2,50E-08
ADP-fossil*	MJ	1,65E+03	1,21E+01	2,41E+00	0,00E+00	0,00E+00	0,00E+00	0,00E+00	0,00E+00	2,06E+03	0,00E+00	0,00E+00	1,14E+00	5,05E+00	3,54E-02	3,50E-02
WDP*	m ³	4,84E+01	6,42E-02	5,77E-02	0,00E+00	0,00E+00	0,00E+00	0,00E+00	0,00E+00	9,47E+01	0,00E+00	0,00E+00	1,76E-02	2,77E-01	4,44E-03	4,19E-03

Acronyms
 GWP-fossil = Global Warming Potential fossil fuels; GWP-biogenic = Global Warming Potential biogenic; GWP-luluc = Global Warming Potential land use and land use change; ODP = Depletion potential of the stratospheric ozone layer; AP = Acidification potential, Accumulated Exceedance; EP-freshwater = Eutrophication potential, fraction of nutrients reaching freshwater end compartment; EP-marine = Eutrophication potential, fraction of nutrients reaching marine end compartment; EP-terrestrial = Eutrophication potential, Accumulated Exceedance; POCP = Formation potential of tropospheric ozone; ADP-minerals&metals = Abiotic depletion potential for non-fossil resources; ADP-fossil = Abiotic depletion for fossil resources potential; WDP = Water (user) deprivation potential, deprivation-weighted water consumption

* Disclaimer: The results of this environmental impact indicator shall be used with care as the uncertainties on these results are high or as there is limited experience with the indicator.

The estimated impact results are only relative statements, which do not indicate the endpoints of the impact categories, exceeding threshold values, safety margins and/or risks.

The results of the end-of-life stage (modules C1-C4) should be considered when using the results of the product stage (modules A1-A3).

Additional mandatory and voluntary impact category indicators

Results per functional or declared unit																
Indicator	Unit	A1-A3	A4	A5	B1	B2	B3	B4	B5	B6	B7	C1	C2	C3	C4	D
GWP-GHG ¹	kg CO ₂ eq.	1,17E+02	8,52E-01	2,34E-01	0,00E+00	0,00E+00	0,00E+00	0,00E+00	0,00E+00	1,86E+01	0,00E+00	0,00E+00	2,67E-01	1,30E+00	8,02E-03	-1,31E+00
PM	Disease inc.	1,37E-05	6,35E-08	1,90E-08	0,00E+00	0,00E+00	0,00E+00	0,00E+00	0,00E+00	1,19E-06	0,00E+00	0,00E+00	2,27E-08	1,99E-07	1,98E-07	-4,63E-06
IRP*	kBq U235 eq.	4,10E+01	5,29E-03	4,08E-03	0,00E+00	0,00E+00	0,00E+00	0,00E+00	0,00E+00	7,13E+01	0,00E+00	0,00E+00	1,75E-03	2,48E-02	2,40E-02	1,39E+00
ETP-fw**	CTUe	1,97E+03	1,62E+00	1,49E+00	0,00E+00	0,00E+00	0,00E+00	0,00E+00	0,00E+00	1,98E+02	0,00E+00	0,00E+00	1,67E+00	1,77E+01	8,41E-01	-5,87E+01
HTP-c**	CTUe	1,10E-06	1,43E-10	9,45E-11	0,00E+00	0,00E+00	0,00E+00	0,00E+00	0,00E+00	2,57E-08	0,00E+00	0,00E+00	2,17E-09	4,66E-09	4,27E-11	-5,69E-08
HTP-nc**	CTUe	5,78E-06	7,63E-09	3,56E-09	0,00E+00	0,00E+00	0,00E+00	0,00E+00	0,00E+00	1,54E-06	0,00E+00	0,00E+00	4,17E-09	5,01E-08	3,67E-10	-1,16E-07
SQP**	-	1,67E+03	7,26E+00	1,03E+00	0,00E+00	0,00E+00	0,00E+00	0,00E+00	0,00E+00	5,40E+02	0,00E+00	0,00E+00	2,39E+00	9,44E+00	9,19E+00	-6,93E+02

¹ This indicator accounts for all greenhouse gases except biogenic carbon dioxide uptake and emissions and biogenic carbon stored in the product. As such, the indicator is identical to GWP-total except that the CF for biogenic CO₂ is set to zero.

** This impact category deals mainly with the eventual impact of low dose ionizing radiation on human health of the nuclear fuel cycle. It does not consider effects due to possible nuclear accidents, occupational exposure nor due to radioactive waste disposal in underground facilities. Potential ionizing radiation from the soil, from radon and from some construction materials is also not measured by this indicator.*

***Disclaimer: The results of this environmental impact indicator shall be used with care as the uncertainties of these results are high or as there is limited experience with the indicator.*

Resource use indicators

Results per functional or declared unit																
Indicator	Unit	A1-A3	A4	A5	B1	B2	B3	B4	B5	B6	B7	C1	C2	C3	C4	D
PERE	MJ	2,51E+02	2,00E-01	1,03E-01	0,00E+00	0,00E+00	0,00E+00	0,00E+00	0,00E+00	1,30E+03	0,00E+00	0,00E+00	1,39E-02	4,68E-01	1,25E-03	-1,02E+02
PERM	MJ	3,23E-03	0,00E+00	0,00E+00	0,00E+00	0,00E+00	0,00E+00	0,00E+00	0,00E+00	0,00E+00	0,00E+00	0,00E+00	0,00E+00	0,00E+00	0,00E+00	0,00E+00
PERT	MJ	2,51E+02	2,00E-01	1,03E-01	0,00E+00	0,00E+00	0,00E+00	0,00E+00	0,00E+00	1,30E+03	0,00E+00	0,00E+00	1,39E-02	4,68E-01	1,25E-03	-1,02E+02
PENRE	MJ	1,54E+03	1,21E+01	2,41E+00	0,00E+00	0,00E+00	0,00E+00	0,00E+00	0,00E+00	2,06E+03	0,00E+00	0,00E+00	8,53E-01	3,78E+00	2,99E-02	-3,29E+02
PENRM	MJ	2,13E-02	0,00E+00	0,00E+00	0,00E+00	0,00E+00	0,00E+00	0,00E+00	0,00E+00	0,00E+00	0,00E+00	0,00E+00	0,00E+00	0,00E+00	0,00E+00	0,00E+00
PENRT	MJ	1,54E+03	1,21E+01	2,41E+00	0,00E+00	0,00E+00	0,00E+00	0,00E+00	0,00E+00	2,06E+03	0,00E+00	0,00E+00	8,53E-01	3,78E+00	2,99E-02	-3,29E+02
SM	kg	5,39E+00	0,00E+00	2,22E+00	0,00E+00	0,00E+00	0,00E+00	0,00E+00	0,00E+00	3,24E+00	0,00E+00	0,00E+00	8,22E-04	4,44E+00	3,90E-04	-1,75E+00
RSF	MJ	1,08E+00	0,00E+00	1,66E-03	0,00E+00	0,00E+00	0,00E+00	0,00E+00	0,00E+00	1,62E+00	0,00E+00	0,00E+00	1,93E-04	5,84E-03	6,06E-06	-2,27E-01
NRSF	MJ	0,00E+00	0,00E+00	0,00E+00	0,00E+00	0,00E+00	0,00E+00	0,00E+00	0,00E+00	0,00E+00	0,00E+00	0,00E+00	0,00E+00	0,00E+00	0,00E+00	0,00E+00
FW	m ³	2,95E+00	1,48E-03	9,71E-04	0,00E+00	0,00E+00	0,00E+00	0,00E+00	0,00E+00	2,21E+00	0,00E+00	0,00E+00	3,12E-03	1,82E-02	9,63E+00	6,34E-01
Acronyms	PERE = Use of renewable primary energy excluding renewable primary energy resources used as raw materials; PERM = Use of renewable primary energy resources used as raw materials; PERT = Total use of renewable primary energy resources; PENRE = Use of non-renewable primary energy excluding non-renewable primary energy resources used as raw materials; PENRM = Use of non-renewable primary energy resources used as raw materials; PENRT = Total use of non-renewable primary energy re-sources; SM = Use of secondary material; RSF = Use of renewable secondary fuels; NRSF = Use of non-renewable secondary fuels; FW = Use of net fresh water															

Waste indicators

Results per functional or declared unit																
Indicator	Unit	A1-A3	A4	A5	B1	B2	B3	B4	B5	B6	B7	C1	C2	C3	C4	D
Hazardous waste disposed	kg	0,00E+00	0,00E+00	0,00E+00	0,00E+00	0,00E+00	0,00E+00	0,00E+00	0,00E+00	0,00E+00	0,00E+00	0,00E+00	0,00E+00	0,00E+00	0,00E+00	0,00E+00
Non-hazardous waste disposed	kg	0,00E+00	0,00E+00	0,00E+00	0,00E+00	0,00E+00	0,00E+00	0,00E+00	0,00E+00	0,00E+00	0,00E+00	0,00E+00	0,00E+00	0,00E+00	0,00E+00	0,00E+00

Radioactive waste disposed	kg	0,00 E+00	0,00 E+00	0,00 E+00	0,00 E+00	0,00 E+00	0,00 E+00	0,00 E+00	0,00 E+00	0,00 E+00	0,00 E+00	0,00 E+00	0,00 E+00	0,00 E+00	0,00 E+00	0,00 E+00
----------------------------	----	--------------	--------------	--------------	--------------	--------------	--------------	--------------	--------------	--------------	--------------	--------------	--------------	--------------	--------------	--------------

Output flow indicators

Results per functional or declared unit																
Indicator	Unit	A1-A3	A4	A5	B1	B2	B3	B4	B5	B6	B7	C1	C2	C3	C4	D
Components for re-use	kg	0,00 E+00	0,00 E+00	0,00 E+00	0,00 E+00	0,00 E+00	0,00 E+00	0,00 E+00	0,00 E+00	0,00 E+00	0,00 E+00	0,00 E+00	0,00 E+00	0,00 E+00	0,00 E+00	0,00 E+00
Material for recycling	kg	0,00 E+00	0,00 E+00	4,66 E-03	0,00 E+00	0,00 E+00	0,00 E+00	0,00 E+00	0,00 E+00	3,36 E+00	0,00 E+00	0,00 E+00	7,41 E-04	5,13 E-01	1,77 E-05	- 1,70 E+00
Materials for energy recovery	kg	0,00 E+00	0,00 E+00	0,00 E+00	0,00 E+00	0,00 E+00	0,00 E+00	0,00 E+00	0,00 E+00	0,00 E+00	0,00 E+00	0,00 E+00	0,00 E+00	0,00 E+00	0,00 E+00	0,00 E+00
Exported energy, electricity	MJ	0,00 E+00	0,00 E+00	2,31 E-03	0,00 E+00	0,00 E+00	0,00 E+00	0,00 E+00	0,00 E+00	4,46 E+01	0,00 E+00	0,00 E+00	1,64 E-04	4,92 E-03	5,51 E-06	- 8,85 E-02
Exported energy, thermal	MJ	0,00 E+00	0,00 E+00	5,02 E-04	0,00 E+00	0,00 E+00	0,00 E+00	0,00 E+00	0,00 E+00	6,19 E-02	0,00 E+00	0,00 E+00	1,99 E-04	1,25 E-03	6,45 E-06	- 2,88 E-01

Additional LCA results

Declaration of variations between products

According to PCR 2.0.1, since this EPD is multi-product, the variation of impact between products shall be declared.

The following table provides this variation of impact between

- reference and minimum (if the minimum is not the reference product).
- reference and the maximum (if the maximum is not the reference product).
- the minimum and the maximum.

Deviation	Between reference and minimum	Between reference and maximum	Between minimum and maximum
GWP-GHG	5,74%	24,50%	30,13%
Global Warming Potential - fossil fuels (GWP-fossil)	6,14%	27,80%	33,80%
Global Warming Potential - biogenic (GWP-biogenic)	4,33%	140%	140%
Global Warming Potential - land use and land use change (GWP-luluc)	0,14%	2,98%	3,12%
Global Warming Potential - total (GWP-total)	5,35%	28,61%	33,83%
Depletion potential of the stratospheric ozone layer (ODP)	8,54%	48,39%	56,34%

Acidification potential, Accumulated Exceedance (AP)	5,39%	20,08%	25,40%
Eutrophication potential - freshwater (EP-freshwater)	5,31%	33,30%	38,44%
Eutrophication potential - marine (EP-marine)	3,03%	15,67%	18,68%
Eutrophication potential - terrestrial (EP-terrestrial)	4,83%	22,99%	27,75%
Photochemical Ozone Creation Potential (POCP)	4,70%	21,81%	26,45%
Abiotic depletion potential - non-fossil resources (ADPE)	0,26%	5,97%	6,24%
Abiotic depletion potential - fossil resources (ADPF)	2,11%	12,95%	15,05%
Water (user) deprivation potential (WDP)	0,81%	10,86%	11,67%

In addition to the most probable scenario, results from the corresponding 100% scenarios are added in this section. The results are calculated for the Functional Unit of 1 cooker hood.

Mandatory impact category indicators according to EN 15804

Results per functional or declared unit

Indicator	Unit	100% recycling					100% landfill					100% incineration				
		C1	C2	C3	C4	D	C1	C2	C3	C4	D	C1	C2	C3	C4	D
GWP-total	kg CO ₂ eq.	0,00 E+0 0	2,28 E-01	2,53 E+0 0	0,00 E+0 0	- 2,88 E+0 1	0,00 E+0 0	2,28 E-01	0,00 E+0 0	8,62 E-02	0,00 E+0 0	0,00 E+0 0	3,71 E-01	7,77 E-01	0,00 E+0 0	0,00 E+0 0
GWP-fossil	kg CO ₂ eq.	0,00 E+0 0	2,28 E-01	2,53 E+0 0	0,00 E+0 0	- 2,91 E+0 1	0,00 E+0 0	2,28 E-01	0,00 E+0 0	8,62 E-02	0,00 E+0 0	0,00 E+0 0	3,71 E-01	7,77 E-01	0,00 E+0 0	0,00 E+0 0
GWP-biogenic	kg CO ₂ eq.	0,00 E+0 0	1,57 E-04	6,41 E-03	0,00 E+0 0	3,72 E-01	0,00 E+0 0	1,57 E-04	0,00 E+0 0	4,27 E-05	0,00 E+0 0	0,00 E+0 0	2,54 E-04	3,61 E-04	0,00 E+0 0	0,00 E+0 0
GWP-luluc	kg CO ₂ eq.	0,00 E+0 0	7,56 E-05	1,63 E-03	0,00 E+0 0	- 6,51 E-02	0,00 E+0 0	7,56 E-05	0,00 E+0 0	4,14 E-05	0,00 E+0 0	0,00 E+0 0	1,23 E-04	1,31 E-04	0,00 E+0 0	0,00 E+0 0
ODP	kg CFC 11 eq.	0,00 E+0 0	4,97 E-09	2,63 E-08	0,00 E+0 0	- 2,87 E-07	0,00 E+0 0	4,97 E-09	0,00 E+0 0	2,02 E-09	0,00 E+0 0	0,00 E+0 0	8,08 E-09	5,66 E-09	0,00 E+0 0	0,00 E+0 0
AP	mol H ⁺ eq.	0,00 E+0 0	7,33 E-04	1,29 E-02	0,00 E+0 0	- 2,03 E+0 0	0,00 E+0 0	7,33 E-04	0,00 E+0 0	5,10 E-04	0,00 E+0 0	0,00 E+0 0	1,19 E-03	1,61 E-03	0,00 E+0 0	0,00 E+0 0
EP-freshwater	kg P eq.	0,00 E+0 0	1,67 E-06	3,99 E-05	0,00 E+0 0	- 9,16 E-03	0,00 E+0 0	1,67 E-06	0,00 E+0 0	7,14 E-07	0,00 E+0 0	0,00 E+0 0	2,72 E-06	4,10 E-06	0,00 E+0 0	0,00 E+0 0
EP-marine	kg N eq.	0,00 E+0 0	2,44 E-04	4,17 E-03	0,00 E+0 0	- 1,00 E-01	0,00 E+0 0	2,44 E-04	0,00 E+0 0	2,00 E-04	0,00 E+0 0	0,00 E+0 0	3,96 E-04	6,28 E-04	0,00 E+0 0	0,00 E+0 0

EP-terrestrial	mol N eq.	0,00 E+0 0	2,68 E-03	4,63 E-02	0,00 E+0 0	- 1,44 E+0 0	0,00 E+0 0	2,68 E-03	0,00 E+0 0	2,14 E-03	0,00 E+0 0	0,00 E+0 0	4,36 E-03	6,86 E-03	0,00 E+0 0	0,00 E+0 0
POCP	kg NMVO C eq.	0,00 E+0 0	1,11 E-03	1,41 E-02	0,00 E+0 0	- 4,07 E-01	0,00 E+0 0	1,11 E-03	0,00 E+0 0	7,73 E-04	0,00 E+0 0	0,00 E+0 0	1,81 E-03	2,29 E-03	0,00 E+0 0	0,00 E+0 0
ADP-minerals&metals*	kg Sb eq.	0,00 E+0 0	7,88 E-07	3,14 E-05	0,00 E+0 0	- 2,59 E-02	0,00 E+0 0	7,88 E-07	0,00 E+0 0	1,10 E-07	0,00 E+0 0	0,00 E+0 0	1,28 E-06	8,13 E-07	0,00 E+0 0	0,00 E+0 0
ADP-fossil*	MJ	0,00 E+0 0	3,24 E+0 0	2,22 E+0 1	0,00 E+0 0	- 3,68 E+0 2	0,00 E+0 0	3,24 E+0 0	0,00 E+0 0	1,78 E+0 0	0,00 E+0 0	0,00 E+0 0	5,26 E+0 0	4,44 E+0 0	0,00 E+0 0	0,00 E+0 0
WDP*	m ³	0,00 E+0 0	1,70 E-02	2,95 E-01	0,00 E+0 0	- 2,30 E+0 1	0,00 E+0 0	1,70 E-02	0,00 E+0 0	7,80 E-02	0,00 E+0 0	0,00 E+0 0	2,76 E-02	1,41 E-01	0,00 E+0 0	0,00 E+0 0
Acronyms	GWP-fossil = Global Warming Potential fossil fuels; GWP-biogenic = Global Warming Potential biogenic; GWP-land use = Global Warming Potential land use and land use change; ODP = Depletion potential of the stratospheric ozone layer; AP = Acidification potential, Accumulated Exceedance; EP-freshwater = Eutrophication potential, fraction of nutrients reaching freshwater end compartment; EP-marine = Eutrophication potential, fraction of nutrients reaching marine end compartment; EP-terrestrial = Eutrophication potential, Accumulated Exceedance; POCP = Formation potential of tropospheric ozone; ADP-minerals&metals = Abiotic depletion potential for non-fossil resources; ADP-fossil = Abiotic depletion for fossil resources potential; WDP = Water (user) deprivation potential, deprivation-weighted water consumption															

* Disclaimer: The results of this environmental impact indicator shall be used with care as the uncertainties on these results are high or as there is limited experience with the indicator.

Additional mandatory and voluntary impact category indicators

Results per functional or declared unit																
Indicator	Unit	100% recycling					100% landfill					100% incineration				
		C1	C2	C3	C4	D	C1	C2	C3	C4	D	C1	C2	C3	C4	D
GWP-GHG ²	kg CO ₂ eq.	0,00 E+00	2,28 E-01	2,53 E+00	0,00 E+00	- 2,93 E+01	0,00 E+00	2,28 E-01	0,00 E+00	8,62 E-02	0,00 E+00	0,00 E+00	3,71 E-01	7,77 E-01	0,00 E+00	0,00 E+00
PM	Disease inc.	0,00 E+00	1,82 E-08	2,81 E-07	0,00 E+00	- 4,90 E-06	0,00 E+00	1,82 E-08	0,00 E+00	1,17 E-08	0,00 E+00	0,00 E+00	2,95 E-08	4,93 E-08	0,00 E+00	0,00 E+00
IRP*	kBq U235 eq.	0,00 E+00	1,40 E-03	3,95 E-02	0,00 E+00	- 1,19 E+00	0,00 E+00	1,40 E-03	0,00 E+00	4,16 E-04	0,00 E+00	0,00 E+00	2,27 E-03	1,92 E-03	0,00 E+00	0,00 E+00
ETP-fw**	CTU e	0,00 E+00	4,29 E-01	6,71 E+00	0,00 E+00	- 2,28 E+03	0,00 E+00	4,29 E-01	0,00 E+00	6,81 E-01	0,00 E+00	0,00 E+00	6,97 E-01	9,93 E+00	0,00 E+00	0,00 E+00
HTP-c**	CTU h	0,00 E+00	3,90 E-11	6,29 E-10	0,00 E+00	- 2,12 E-07	0,00 E+00	3,90 E-11	0,00 E+00	1,39 E-11	0,00 E+00	0,00 E+00	6,33 E-11	3,80 E-10	0,00 E+00	0,00 E+00
HTP-nc**	CTU h	0,00 E+00	2,03 E-09	3,45 E-08	0,00 E+00	- 2,12 E-05	0,00 E+00	2,03 E-09	0,00 E+00	4,67 E-10	0,00 E+00	0,00 E+00	3,29 E-09	1,57 E-08	0,00 E+00	0,00 E+00
SQP**	-	0,00 E+00	1,91 E+00	1,03 E+01	0,00 E+00	- 7,24 E+02	0,00 E+00	1,91 E+00	0,00 E+00	3,51 E+00	0,00 E+00	0,00 E+00	3,11 E+00	4,98 E+00	0,00 E+00	0,00 E+00

² This indicator accounts for all greenhouse gases except biogenic carbon dioxide uptake and emissions and biogenic carbon stored in the product. As such, the indicator is identical to GWP-total except that the CF for biogenic CO₂ is set to zero.

Acronyms	PM = Potential incidence of disease due to particular matter emissions; IRP = Ionizing radiation, human health; ETP-fw = Eco-toxicity (freshwater); HTP-c = Human toxicity, cancer effects; HTP-nc = Human toxicity, non-cancer effects; SQP = Land use related impacts/Soil quality.
----------	---

** This impact category deals mainly with the eventual impact of low dose ionizing radiation on human health of the nuclear fuel cycle. It does not consider effects due to possible nuclear accidents, occupational exposure nor due to radioactive waste disposal in underground facilities. Potential ionizing radiation from the soil, from radon and from some construction materials is also not measured by this indicator.*

***Disclaimer: The results of this environmental impact indicator shall be used with care as the uncertainties of these results are high or as there is limited experience with the indicator.*

Resource use indicators

Results per functional or declared unit																
		100% recycling					100% landfill					100% incineration				
Indicator	Unit	C1	C2	C3	C4	D	C1	C2	C3	C4	D	C1	C2	C3	C4	D
PERE	MJ	0,00 E+00	5,27 E-02	1,71 E+00	0,00 E+00	- 1,09 E+02	0,00 E+00	5,27 E-02	0,00 E+00	1,68 E-02	0,00 E+00	0,00 E+00	8,56 E-02	8,94 E-02	0,00 E+00	0,00 E+00
PERM	MJ	0,00 E+00	0,00 E+00	0,00 E+00	0,00 E+00	0,00 E+00	0,00 E+00	0,00 E+00	0,00 E+00	0,00 E+00	0,00 E+00	0,00 E+00	0,00 E+00	0,00 E+00	0,00 E+00	0,00 E+00
PERT	MJ	0,00 E+00	5,27 E-02	1,71 E+00	0,00 E+00	- 1,09 E+02	0,00 E+00	5,27 E-02	0,00 E+00	1,68 E-02	0,00 E+00	0,00 E+00	8,56 E-02	8,94 E-02	0,00 E+00	0,00 E+00
PENRE	MJ	0,00 E+00	3,24 E+00	2,22 E+01	0,00 E+00	- 3,69 E+02	0,00 E+00	3,24 E+00	0,00 E+00	1,78 E+00	0,00 E+00	0,00 E+00	5,26 E+00	4,44 E+00	0,00 E+00	0,00 E+00
PENRM	MJ	0,00 E+00	0,00 E+00	0,00 E+00	0,00 E+00	0,00 E+00	0,00 E+00	0,00 E+00	0,00 E+00	0,00 E+00	0,00 E+00	0,00 E+00	0,00 E+00	0,00 E+00	0,00 E+00	0,00 E+00
PENRT	MJ	0,00 E+00	3,24 E+00	2,22 E+01	0,00 E+00	- 3,69 E+02	0,00 E+00	3,24 E+00	0,00 E+00	1,78 E+00	0,00 E+00	0,00 E+00	5,26 E+00	4,44 E+00	0,00 E+00	0,00 E+00
SM	kg	0,00 E+00	3,12 E-03	5,81 E+00	0,00 E+00	- 2,11 E+00	0,00 E+00	3,12 E-03	0,00 E+00	7,98 E-04	0,00 E+00	0,00 E+00	5,07 E-03	1,04 E-02	0,00 E+00	0,00 E+00
RSF	MJ	0,00 E+00	7,34 E-04	2,73 E-02	0,00 E+00	- 2,49 E-01	0,00 E+00	7,34 E-04	0,00 E+00	1,49 E-04	0,00 E+00	0,00 E+00	1,19 E-03	1,22 E-03	0,00 E+00	0,00 E+00
NRSF	MJ	0,00 E+00	0,00 E+00	0,00 E+00	0,00 E+00	0,00 E+00	0,00 E+00	0,00 E+00	0,00 E+00	0,00 E+00	0,00 E+00	0,00 E+00	0,00 E+00	0,00 E+00	0,00 E+00	0,00 E+00
FW	m ³	0,00 E+00	3,91 E-04	6,78 E-03	0,00 E+00	- 7,57 E-01	0,00 E+00	3,91 E-04	0,00 E+00	1,18 E-03	0,00 E+00	0,00 E+00	6,36 E-04	3,08 E-03	0,00 E+00	0,00 E+00
Acronyms	PERE = Use of renewable primary energy excluding renewable primary energy resources used as raw materials; PERM = Use of renewable primary energy resources used as raw materials; PERT = Total use of renewable primary energy resources; PENRE = Use of non-renewable primary energy excluding non-renewable primary energy resources used as raw materials; PENRM = Use of non-renewable primary energy resources used as raw materials; PENRT = Total use of non-renewable primary energy resources; SM = Use of secondary material; RSF = Use of renewable secondary fuels; NRSF = Use of non-renewable secondary fuels; FW = Use of net fresh water															

Waste indicators

Results per functional or declared unit																
		100% recycling					100% landfill					100% incineration				
Indicator	Unit	C1	C2	C3	C4	D	C1	C2	C3	C4	D	C1	C2	C3	C4	D

Hazardous waste disposed	kg	0,00 E+00	3,29 E-03	1,23 E-01	0,00 E+00	- 1,11 E+01	0,00 E+00	3,29 E-03	0,00 E+00	1,45 E-03	0,00 E+00	0,00 E+00	5,35 E-03	2,03 E-02	0,00 E+00	0,00 E+00
Non-hazardous waste disposed	kg	0,00 E+00	3,52 E-02	1,79 E+00	0,00 E+00	- 4,14 E+01	0,00 E+00	3,52 E-02	0,00 E+00	4,56 E-01	0,00 E+00	0,00 E+00	5,71 E-02	2,50 E+01	0,00 E+00	0,00 E+00
Radioactive waste disposed	kg	0,00 E+00	9,52 E-07	2,96 E-05	0,00 E+00	- 7,41 E-04	0,00 E+00	9,52 E-07	0,00 E+00	2,62 E-07	0,00 E+00	0,00 E+00	1,55 E-06	1,28 E-06	0,00 E+00	0,00 E+00

Output flow indicators

Results per functional or declared unit																
		100% recycling					100% landfill					100% incineration				
Indicator	Unit	C1	C2	C3	C4	D	C1	C2	C3	C4	D	C1	C2	C3	C4	D
Components for re-use	kg	0,00 E+00	0,00 E+00	0,00 E+00	0,00 E+00	0,00 E+00	0,00 E+00	0,00 E+00	0,00 E+00	0,00 E+00	0,00 E+00	0,00 E+00	0,00 E+00	0,00 E+00	0,00 E+00	0,00 E+00
Material for recycling	kg	0,00 E+00	2,81 E-03	3,58 E-01	0,00 E+00	- 1,77 E+00	0,00 E+00	2,81 E-03	0,00 E+00	6,62 E-04	0,00 E+00	0,00 E+00	4,57 E-03	7,02 E+00	0,00 E+00	0,00 E+00
Materials for energy recovery	kg	0,00 E+00	0,00 E+00	0,00 E+00	0,00 E+00	0,00 E+00	0,00 E+00	0,00 E+00	0,00 E+00	0,00 E+00	0,00 E+00	0,00 E+00	0,00 E+00	0,00 E+00	0,00 E+00	0,00 E+00
Exported energy, electricity	MJ	0,00 E+00	6,23 E-04	1,72 E-01	0,00 E+00	- 1,01 E-01	0,00 E+00	6,23 E-04	0,00 E+00	1,15 E-04	0,00 E+00	0,00 E+00	1,01 E-03	5,63 E+00	0,00 E+00	0,00 E+00
Exported energy, thermal	MJ	0,00 E+00	7,54 E-04	5,84 E-02	0,00 E+00	- 3,39 E-01	0,00 E+00	7,54 E-04	0,00 E+00	6,38 E-05	0,00 E+00	0,00 E+00	1,23 E-03	1,09 E+00	0,00 E+00	0,00 E+00

REFERENCES

General Programme Instructions of International EPD System. Version 5.0.1.

PCR 2019:14. Construction products. Version 2.0.1.

NPCR 030, Part B for ventilation components, version 1.1 (PCR Part B: c-PCR-018).

EN 15941 Sustainability of construction works - Data quality for environmental assessment of products and construction work - Selection and use of data

Belle, Jürgen & Hirtz, Daniela & Sänglerlaub, Sven. (2024). *Expert Survey on the Impact of Cardboard and Paper Recycling Processes, Fiber-Based Composites/Laminates and Regulations, and Their Significance for the Circular Economy and the Sustainability of the German Paper Industry. Sustainability, 16(15), 6610.*

European Commission (2021). *COMMISSION RECOMMENDATION (EU) 2021/2279 of 15 December 2021 on the use of the Environmental Footprint methods to measure and communicate the life cycle environmental performance of products and organisations.* (OJ L 471, 30.12.2021, pp. 1–396). EUR-Lex.

EBM Paps (n.d.). EC motor DV280. High performance EC external rotor motors up to 20 kW shaft power for driving fans.

EuRIC AISBL (n.d.). *Metal Recycling – Factsheet.*
Recycling: Bridging Circular Economy & Climate Policy. Brussels, Belgium.

Naturvårdsverket (2023). *Sveriges återvinning av förpackningar: Uppföljning av producentansvar för förpackningar 2023* (Report).

Outokumpu. *Environmental Product Declaration for Hot rolled austenitic stainless steel.*
Registration number: EPD-IES-0017255. The International EPD® System.

Vainio, 2025. Tovenco LCA Report - Cooker hood Line 40-100 cm.

VERSION HISTORY

Original Version of the EPD, 2026-03-23

